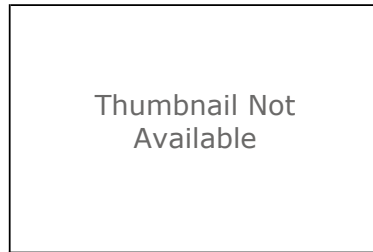


ACPF Crop History by field: Nebraska 2010-2020

Text File



Tags

Digitizing, farming, NASS Crop Data Layer, boundaries, conservation planning, geoscientificInformation, United States Department of Agriculture (USDA), USA, USDA, Field Boundaries, Farming, USDA Aerial photography, Nebraska, USDA/ARS, Agricultural Conservation Planning Framework, ACPF

Summary

Improving the quality of waters discharged from agricultural watersheds requires comprehensive and adaptive approaches for planning and implementing conservation practices. These measures will need to consider landscape hydrology, distributions of soil types, land cover, and crop distributions in a comprehensive manner. The two most consistent challenges to these efforts will be consistency and reliability of data, and the capacity to translate conservation planning from watershed to farm and field scales. The translation of scale is required because, while conservation practices can be planned based on a watershed scale framework, they must be implemented by landowners in specific fields and riparian sites that are under private ownership. To support these goals it has been necessary to develop planning approaches, high-resolution spatial datasets, and conservation practice assessment tools that will allow the agricultural and conservation communities to characterize and mitigate these challenges.

Description

This crop history table has been assembled to support field-scale agricultural conservation planning. The original data used to create this database are the NASS Crop Data Layer datasets for individual states. For each year in the period of record, 2010-2020, the dominant (majority) land use and its percentage of the field's area are assigned to each individual field polygon (e.g 'maj19' and 'pct19'). The Crop History (CH) table carries the dominant land use and percentage for each field by year.

Credits

USDA/ARS

Use limitations

USDA-ARS makes no representation nor extends any warranties of any kind, either express or implied, of merchantability or fitness of the information obtained using the ACPF toolbox or data for any particular purpose, or that use of the ACPF toolbox or data will not infringe any patent, copyright, trademark, or other intellectual property rights, or any other express or implied warranties. In no event shall the creators, custodians, or distributors of this information be liable for any damages arising out of its use (or the inability to use it).

Extent

There is no extent for this item.

Scale Range

Maximum (zoomed in) 1:5,000

Minimum (zoomed out) 1:500,000

ArcGIS Metadata ►

Topics and Keywords ►

THEMES OR CATEGORIES OF THE RESOURCE [geoscientificInformation, farming](#)

* CONTENT TYPE [Other Documents](#)
 EXPORT TO FGDC CSDGM XML FORMAT AS RESOURCE DESCRIPTION [No](#)

PLACE KEYWORDS [Nebraska](#)

THEME KEYWORDS [Farming, Geoscientific](#)

[Hide Topics and Keywords ▲](#)

Citation ►

TITLE [ACPF Crop History by field: Nebraska 2010-2020](#)

PUBLICATION DATE [2018-04-01 00:00:00](#)

EDITION [field season 2017](#)

PRESENTATION FORMATS [* digital document](#)
 FGDC GEOSPATIAL PRESENTATION FORMAT [tabular digital data](#)

[Hide Citation ▲](#)

Citation Contacts ►

RESPONSIBLE PARTY

ORGANIZATION'S NAME [USDA, Agricultural Research Service, National Laboratory of Agriculture and the Environment](#)

INDIVIDUAL'S NAME [David James](#)

CONTACT'S POSITION [Geographic Information Specialist](#)

CONTACT'S ROLE [originator](#)

[Hide Citation Contacts ▲](#)

Resource Details ►

DATASET LANGUAGES [English \(UNITED STATES\)](#)

DATASET CHARACTER SET [utf8 - 8 bit UCS Transfer Format](#)

STATUS [completed](#)

SPATIAL REPRESENTATION TYPE [* text table](#)

* PROCESSING ENVIRONMENT [Version 6.2 \(Build 9200\) ; Esri ArcGIS 10.8.1.14362](#)

CREDITS

[USDA/ARS](#)

ARCGIS ITEM PROPERTIES

* NAME [NE_ACPFFields_CropHistory2010_2020.csv](#)

* SIZE [0.000](#)

* LOCATION [file://](#)

[\\CURLEW\D\\$\ACPFproc\ADCcontributions\exportIL_NE\Nebraska\NE_ACPFFields_CropHistory2010_2020.csv](#)

* ACCESS PROTOCOL [Local Area Network](#)

[Hide Resource Details ▲](#)

Extents ►

EXTENT

DESCRIPTION

[Nebraska](#)

GEOGRAPHIC EXTENT
 GEOGRAPHIC DESCRIPTION
 GEOGRAPHIC IDENTIFIER
 VALUE Nebraska

DESCRIPTION CONTAINS THE RESOURCE Yes

EXTENT IN THE ITEM'S COORDINATE SYSTEM
 * WEST LONGITUDE -56253.742200
 * EAST LONGITUDE -43006.013700
 * SOUTH LATITUDE 2515912.979200
 * NORTH LATITUDE 2531084.223400
 * EXTENT CONTAINS THE RESOURCE Yes

[Hide Extents ▲](#)

Resource Points of Contact ►

POINT OF CONTACT
 INDIVIDUAL'S NAME David James
 ORGANIZATION'S NAME USDA, Agricultural Research Service, National Laboratory of Agriculture and the Environment
 CONTACT'S POSITION Geographic Information specialist
 CONTACT'S ROLE point of contact

CONTACT INFORMATION ►

PHONE
 VOICE (515) 294-6858

ADDRESS

TYPE postal
 DELIVERY POINT 1015 N. University Blvd.
 CITY Ames
 ADMINISTRATIVE AREA Iowa
 POSTAL CODE 50011
 COUNTRY US
 E-MAIL ADDRESS david.james@ars.usda.gov

[Hide Contact information ▲](#)

[Hide Resource Points of Contact ▲](#)

Resource Maintenance ►

RESOURCE MAINTENANCE
 DATE OF NEXT UPDATE 2019-04-01 00:00:00
 UPDATE FREQUENCY not planned

[Hide Resource Maintenance ▲](#)

Resource Constraints ►

LEGAL CONSTRAINTS

LIMITATIONS OF USE

In no event shall the creators, custodians, or distributors of this information be liable for any damages arising out of its use (or the inability to use it).

CONSTRAINTS

LIMITATIONS OF USE

USDA-ARS makes no representation nor extends any warranties of any kind, either express or implied, of merchantability or fitness of the information obtained using the ACPF toolbox or data for any particular purpose, or that use of the ACPF toolbox or data will not infringe any patent, copyright,

trademark, or other intellectual property rights, or any other express or implied warranties. In no event shall the creators, custodians, or distributors of this information be liable for any damages arising out of its use (or the inability to use it).

[Hide Resource Constraints ▲](#)

Spatial Reference ►

ARCGIS COORDINATE SYSTEM

- * TYPE Projected
- * GEOGRAPHIC COORDINATE REFERENCE GCS_North_American_1983
- * PROJECTION USA_Contiguous_Albers_Equal_Area_Conic_USGS_version
- * COORDINATE REFERENCE DETAILS
 - PROJECTED COORDINATE SYSTEM
 - WELL-KNOWN IDENTIFIER 102039
 - X ORIGIN -16901100
 - Y ORIGIN -6972200
 - XY SCALE 10000
 - Z ORIGIN -100000
 - Z SCALE 10000
 - M ORIGIN -100000
 - M SCALE 10000
 - XY TOLERANCE 0.001
 - Z TOLERANCE 0.001
 - M TOLERANCE 0.001
 - HIGH PRECISION true
 - LATEST WELL-KNOWN IDENTIFIER 102039
 - WELL-KNOWN TEXT PROJCS["USA_Contiguous_Albers_Equal_Area_Conic_USGS_version",GEOGCS ["GCS_North_American_1983",DATUM["D_North_American_1983",SPHEROID ["GRS_1980",6378137.0,298.257222101]],PRIMEM["Greenwich",0.0],UNIT ["Degree",0.0174532925199433]],PROJECTION["Albers"],PARAMETER["False_Easting",0.0],PARAMETER ["False_Northing",0.0],PARAMETER["Central_Meridian",-96.0],PARAMETER ["Standard_Parallel_1",29.5],PARAMETER["Standard_Parallel_2",45.5],PARAMETER ["Latitude_Of_Origin",23.0],UNIT["Meter",1.0],AUTHORITY["Esri",102039]]

[Hide Spatial Reference ▲](#)

Data Quality ►

SCOPE OF QUALITY INFORMATION ►

- RESOURCE LEVEL attribute
- SCOPE DESCRIPTION
 - ATTRIBUTES
 - There are many...

[Hide Scope of quality information ▲](#)

[Hide Data Quality ▲](#)

Lineage ►

LINEAGE STATEMENT

These data are derived from the NASS Cropland Data Layer over a span of years appropriate for its use.

[Hide Lineage ▲](#)

Distribution ►

DISTRIBUTOR ►

- CONTACT INFORMATION
 - INDIVIDUAL'S NAME David James

ORGANIZATION'S NAME USDA, Agricultural Research Service, National Laboratory of Agriculture and the Environment

CONTACT'S POSITION Geographic Information specialist

CONTACT'S ROLE distributor

CONTACT INFORMATION ►

PHONE

VOICE (515) 294-6858

ADDRESS

TYPE postal

DELIVERY POINT 1015 N. University Blvd.

CITY Ames

ADMINISTRATIVE AREA Iowa

POSTAL CODE 50011

COUNTRY US

E-MAIL ADDRESS david.james@ars.usda.gov

Hide Contact information ▲

Hide Distributor ▲

DISTRIBUTION FORMAT

VERSION 10.7.1

* NAME Text File

TRANSFER OPTIONS

* TRANSFER SIZE 0.000

ONLINE SOURCE

LOCATION <https://acpf4watersheds.org/>

Hide Distribution ▲

Fields ►

DETAILS FOR OBJECT NE_ACPFFields_CropHistory2010_2020.csv ►

* TYPE Table

* ROW COUNT 0

DEFINITION

File geodatabase table of field level land use for individual HUC12 watersheds

DEFINITION SOURCE

Originator

FIELD OBJECTID ►

* ALIAS OBJECTID

* DATA TYPE OID

* WIDTH 4

* PRECISION 0

* SCALE 0

FIELD DESCRIPTION

Internal feature number.

DESCRIPTION SOURCE

Esri

DESCRIPTION OF VALUES

Sequential unique whole numbers that are automatically generated.

[Hide Field OBJECTID ▲](#)

FIELD FBndID ►

- * ALIAS FBndID
- * DATA TYPE String
- * WIDTH 255
- * PRECISION 0
- * SCALE 0

FIELD DESCRIPTION

A unique field identifier constructed by concatenating the HUC12 identification code and a sequential number. This field should be used for joining the land use table (LU6) with the field boundaries feature class.

DESCRIPTION SOURCE

Originator

DESCRIPTION OF VALUES

A sequential polygon identifier

[Hide Field FBndID ▲](#)

FIELD maj10 ►

- * ALIAS maj10
- * DATA TYPE Integer
- * WIDTH 4
- * PRECISION 0
- * SCALE 0

FIELD DESCRIPTION

The dominant (majority) NASS Crop Data Layer code - 2010

DESCRIPTION SOURCE

Author

LIST OF VALUES

VALUE 1-254

DESCRIPTION Value

ENUMERATED DOMAIN VALUE DEFINITION SOURCE NASS

[Hide Field maj10 ▲](#)

FIELD pct10 ►

- * ALIAS pct10
- * DATA TYPE Integer
- * WIDTH 4
- * PRECISION 0
- * SCALE 0

FIELD DESCRIPTION

The percent of the field assigned as the dominant land use for the year.

DESCRIPTION SOURCE

Calculated

RANGE OF VALUES

MINIMUM VALUE 0

MAXIMUM VALUE 100

[Hide Field pct10 ▲](#)

FIELD maj11 ►

* ALIAS maj11
 * DATA TYPE Integer
 * WIDTH 4
 * PRECISION 0
 * SCALE 0
 FIELD DESCRIPTION
 The dominant (majority) NASS Crop Data Layer code - 2011

DESCRIPTION SOURCE
 Author

LIST OF VALUES
 VALUE 1-254
 DESCRIPTION Value
 ENUMERATED DOMAIN VALUE DEFINITION SOURCE NASS

Hide Field maj11 ▲

FIELD pct11 ►

* ALIAS pct11
 * DATA TYPE Integer
 * WIDTH 4
 * PRECISION 0
 * SCALE 0
 FIELD DESCRIPTION
 The percent of the field assigned as the dominant land use for the year.

DESCRIPTION SOURCE
 Calculated

RANGE OF VALUES
 MINIMUM VALUE 0
 MAXIMUM VALUE 100

Hide Field pct11 ▲

FIELD maj12 ►

* ALIAS maj12
 * DATA TYPE Integer
 * WIDTH 4
 * PRECISION 0
 * SCALE 0
 FIELD DESCRIPTION
 The dominant (majority) NASS Crop Data Layer code - 2012

DESCRIPTION SOURCE
 Author

LIST OF VALUES
 VALUE 1-254
 DESCRIPTION Value
 ENUMERATED DOMAIN VALUE DEFINITION SOURCE NASS

Hide Field maj12 ▲

FIELD pct12 ►

* ALIAS pct12
 * DATA TYPE Integer
 * WIDTH 4
 * PRECISION 0
 * SCALE 0
 FIELD DESCRIPTION
 The percent of the field assigned as the dominant land use for the year.

DESCRIPTION SOURCE

Calculated

RANGE OF VALUES

MINIMUM VALUE 0

MAXIMUM VALUE 100

[Hide Field pct12 ▲](#)

FIELD maj13 ►

* ALIAS maj13

* DATA TYPE Integer

* WIDTH 4

* PRECISION 0

* SCALE 0

FIELD DESCRIPTION

The dominant (majority) NASS Crop Data Layer code - 2013

DESCRIPTION SOURCE

Author

LIST OF VALUES

VALUE 1-254

DESCRIPTION Value

ENUMERATED DOMAIN VALUE DEFINITION SOURCE NASS

[Hide Field maj13 ▲](#)

FIELD pct13 ►

* ALIAS pct13

* DATA TYPE Integer

* WIDTH 4

* PRECISION 0

* SCALE 0

FIELD DESCRIPTION

The percent of the field assigned as the dominant land use for the year.

DESCRIPTION SOURCE

Calculated

RANGE OF VALUES

MINIMUM VALUE 0

MAXIMUM VALUE 100

[Hide Field pct13 ▲](#)

FIELD maj14 ►

* ALIAS maj14

* DATA TYPE Integer

* WIDTH 4

* PRECISION 0

* SCALE 0

FIELD DESCRIPTION

The dominant (majority) NASS Crop Data Layer code - 2014

DESCRIPTION SOURCE

Author

LIST OF VALUES

VALUE 1-254

DESCRIPTION Value

ENUMERATED DOMAIN VALUE DEFINITION SOURCE NASS

[Hide Field maj14 ▲](#)

FIELD pct14 ►

* ALIAS pct14
 * DATA TYPE Integer
 * WIDTH 4
 * PRECISION 0
 * SCALE 0

FIELD DESCRIPTION

The percent of the field assigned as the dominant land use for the year.

DESCRIPTION SOURCE

Calculated

RANGE OF VALUES

MINIMUM VALUE 0
 MAXIMUM VALUE 100

[Hide Field pct14 ▲](#)

FIELD maj15 ►

* ALIAS maj15
 * DATA TYPE Integer
 * WIDTH 4
 * PRECISION 0
 * SCALE 0

FIELD DESCRIPTION

The dominant (majority) NASS Crop Data Layer code - 2015

DESCRIPTION SOURCE

Author

LIST OF VALUES

VALUE 1-254
 DESCRIPTION Value
 ENUMERATED DOMAIN VALUE DEFINITION SOURCE NASS

[Hide Field maj15 ▲](#)

FIELD pct15 ►

* ALIAS pct15
 * DATA TYPE Integer
 * WIDTH 4
 * PRECISION 0
 * SCALE 0

FIELD DESCRIPTION

The percent of the field assigned as the dominant land use for the year.

DESCRIPTION SOURCE

Calculated

RANGE OF VALUES

MINIMUM VALUE 0
 MAXIMUM VALUE 100

[Hide Field pct15 ▲](#)

FIELD maj16 ►

* ALIAS maj16
 * DATA TYPE Integer
 * WIDTH 4

* PRECISION 0

* SCALE 0

FIELD DESCRIPTION

The dominant (majority) NASS Crop Data Layer code - 2016

DESCRIPTION SOURCE

author

LIST OF VALUES

VALUE 1-254

DESCRIPTION Value

ENUMERATED DOMAIN VALUE DEFINITION SOURCE USDA NASS

[Hide Field maj16 ▲](#)

FIELD pct16 ►

* ALIAS pct16

* DATA TYPE Integer

* WIDTH 4

* PRECISION 0

* SCALE 0

FIELD DESCRIPTION

The percent of the field assigned as the dominant land use for the year.

DESCRIPTION SOURCE

calculated

RANGE OF VALUES

MINIMUM VALUE 1

MAXIMUM VALUE 100

[Hide Field pct16 ▲](#)

FIELD maj17 ►

* ALIAS maj17

* DATA TYPE Integer

* WIDTH 4

* PRECISION 0

* SCALE 0

FIELD DESCRIPTION

The dominant (majority) NASS Crop Data Layer code - 2017

DESCRIPTION SOURCE

author

LIST OF VALUES

VALUE 1-254

DESCRIPTION Value

ENUMERATED DOMAIN VALUE DEFINITION SOURCE USDA NASS

[Hide Field maj17 ▲](#)

FIELD pct17 ►

* ALIAS pct17

* DATA TYPE Integer

* WIDTH 4

* PRECISION 0

* SCALE 0

FIELD DESCRIPTION

The percent of the field assigned as the dominant land use for the year.

DESCRIPTION SOURCE

calculated

RANGE OF VALUES
 MINIMUM VALUE 1
 MAXIMUM VALUE 100

[Hide Field pct17 ▲](#)

FIELD maj18 ►

* ALIAS maj18
 * DATA TYPE Integer
 * WIDTH 4
 * PRECISION 0
 * SCALE 0

FIELD DESCRIPTION

The dominant (majority) NASS Crop Data Layer code - 2018

DESCRIPTION SOURCE

author

LIST OF VALUES

VALUE 1-254

DESCRIPTION Value

ENUMERATED DOMAIN VALUE DEFINITION SOURCE NASS CDL

[Hide Field maj18 ▲](#)

FIELD pct18 ►

* ALIAS pct18
 * DATA TYPE Integer
 * WIDTH 4
 * PRECISION 0
 * SCALE 0

FIELD DESCRIPTION

The percent of the field assigned as the dominant land use for the year.

DESCRIPTION SOURCE

author

RANGE OF VALUES

MINIMUM VALUE 1

MAXIMUM VALUE 100

[Hide Field pct18 ▲](#)

FIELD maj19 ►

* ALIAS maj19
 * DATA TYPE Integer
 * WIDTH 4
 * PRECISION 0
 * SCALE 0

FIELD DESCRIPTION

The dominant (majority) NASS Crop Data Layer code - 2019

DESCRIPTION SOURCE

author

LIST OF VALUES

VALUE 1-254

DESCRIPTION Value

ENUMERATED DOMAIN VALUE DEFINITION SOURCE NASS CDL

[Hide Field maj19 ▲](#)

FIELD pct19 ▶

* ALIAS pct19
 * DATA TYPE Integer
 * WIDTH 4
 * PRECISION 0
 * SCALE 0

FIELD DESCRIPTION

The percent of the field assigned as the dominant land use for the year.

DESCRIPTION SOURCE

caclulated

RANGE OF VALUES

MINIMUM VALUE 1
 MAXIMUM VALUE 100

[Hide Field pct19 ▲](#)

FIELD maj20 ▶

* ALIAS maj20
 * DATA TYPE Integer
 * WIDTH 4
 * PRECISION 0
 * SCALE 0

FIELD DESCRIPTION

The dominant (majority) NASS Crop Data Layer code - 2020

DESCRIPTION SOURCE

Author

[Hide Field maj20 ▲](#)

FIELD pct20 ▶

* ALIAS pct20
 * DATA TYPE Integer
 * WIDTH 4
 * PRECISION 0
 * SCALE 0

FIELD DESCRIPTION

The percent of the field assigned as the dominant land use for the year.

DESCRIPTION SOURCE

calculated

[Hide Field pct20 ▲](#)

[Hide Details for object NE_ACPFFields_CropHistory2010_2020.csv ▲](#)

OVERVIEW DESCRIPTION ▶

ENTITY AND ATTRIBUTE OVERVIEW

The land use assigned to the fields in this table are derived from the NASS Crop Data Layer for each year in the period of record. For the majority assignment (e.g. maj12), the field is assigned as per the VALUE field below, which is the original NASS CDL value. The value assigned is the ROTVAL field. ROTVAL (rotation value) is a summary classification used to develop a concatenated rotation string when combined with other years of data. Domain:C-Corn, B-Soybean, E-Sugarbeets, F-Forest, p-Grapes, G-Sorghum, I-Idle, J-Rice, L-Double crops, N-Cotton, P-Pasture, R-Other, T-Water, W-Wheat, U-Developed, X-Barren, clouds, no data, a-Nuts, d-Fruit, g-SmallGrains, m-Legumes, o -OilSeed, q-Orchards, v-Vegetables. A summary for the 2017 database is as follows:

Value,CLASS_NAME,ROTVAL

1,Corn,C
2,Cotton,N
3,Rice,J
4,Sorghum,G
5,Soybeans,B
6,Sunflower,o
10,Peanuts,a
11,Tobacco,R
12,Sweet Corn,C
13,Pop or Orn Corn,C
14,Mint,R
21,Barley,g
22,Durum Wheat,W
23,Spring Wheat,W
24,Winter Wheat,W
25,Other Small Grains,g
26,Dbl Crop WinWht/Soybeans,L
27,Rye,g
28,Oats,g
29,Millet,g
30,Speltz,g
31,Canola,o
32,Flaxseed,o
33,Safflower,o
34,Rape Seed,o
35,Mustard,R
36,Alfalfa,P
37,Other Hay/Non Alfalfa,P
38,Camelina,g
39,Buckwheat,g
41,Sugarbeets,E
42,Dry Beans,m
43,Potatoes,v
44,Other Crops,R
45,Sugarcane,R
46,Sweet Potatoes,v
47,Misc Veggies & Fruits,R
48,Watermelons,d
49,Onions,v
50,Cucumbers,v
51,Chick Peas,m
52,Lentils,m
53,Peas,m
54,Tomatoes,v
55,Caneberries,d
56,Hops,R
57,Herbs,R
58,Clover/Wildflowers,R
59,Sod/Grass Seed,R
60,Switchgrass,P
61,Fallow/Idle Cropland,I
63,Forest,F
64,Shrubland,F
65,Barren,X
66,Cherries,q
67,Peaches,q
68,Apples,q
69,Grapes,p
70,Christmas Trees,F
71,Other Tree Crops,q
72,Citrus,q
74,Pecans,a
75,Almonds,a
76,Walnuts,a
77,Pears,q

81,Clouds/No Data,X
82,Developed,U
83,Water,T
87,Wetlands,T
88,Nonag/Undefined,X
92,Aquaculture,T
111,Open Water,T
112,Perennial Ice/Snow,T
121,Developed/Open Space,U
122,Developed/Low Intensity,U
123,Developed/Med Intensity,U
124,Developed/High Intensity,U
131,Barren,X
141,Deciduous Forest,F
142,Evergreen Forest,F
143,Mixed Forest,F
152,Shrubland,F
176,Grassland/Pasture,P
190,Woody Wetlands,T
195,Herbaceous Wetlands,T
204,Pistachios,a
205,Triticale,g
206,Carrots,v
207,Asparagus,v
208,Garlic,v
209,Cantaloupes,d
210,Prunes,q
211,Olives,q
212,Oranges,q
213,Honeydew Melons,d
214,Broccoli,v
216,Peppers,v
217,Pomegranates,d
218,Nectarines,q
219,Greens,v
220,Plums,q
221,Strawberries,d
222,Squash,v
223,Apricots,q
224,Vetch,m
225,Dbf Crop WinWht/Corn,L
226,Dbf Crop Oats/Corn,L
227,Lettuce,v
229,Pumpkins,v
230,Dbf Crop Lettuce/Durum Wht,L
231,Dbf Crop Lettuce/Cantaloupe,L
232,Dbf Crop Lettuce/Cotton,L
233,Dbf Crop Lettuce/Barley,L
234,Dbf Crop Durum Wht/Sorghum,L
235,Dbf Crop Barley/Sorghum,L
236,Dbf Crop WinWht/Sorghum,L
237,Dbf Crop Barley/Corn,L
238,Dbf Crop WinWht/Cotton,L
239,Dbf Crop Soybeans/Cotton,L
240,Dbf Crop Soybeans/Oats,L
241,Dbf Crop Corn/Soybeans,L
242,Blueberries,d
243,Cabbage,v
244,Cauliflower,v
245,Celery,v
246,Radishes,v
247,Turnips,v
248,Eggplants,v
249,Gourds,v
250,Cranberries,d

254,Dbl Crop Barley/Soybeans,L

[Hide Overview Description ▲](#)

[Hide Fields ▲](#)

Metadata Details ►

METADATA LANGUAGE English (UNITED STATES)
 METADATA CHARACTER SET utf8 - 8 bit UCS Transfer Format

FUNCTION OF THE RESOURCE download

SCOPE OF THE DATA DESCRIBED BY THE METADATA dataset
 SCOPE NAME * non-geographic dataset

* LAST UPDATE 2021-09-01

ARCGIS METADATA PROPERTIES

METADATA FORMAT ArcGIS 1.0
 STANDARD OR PROFILE USED TO EDIT METADATA NAP
 METADATA STYLE North American Profile of ISO19115 2003

CREATED IN ARCGIS FOR THE ITEM 2021-08-27 14:52:10
 LAST MODIFIED IN ARCGIS FOR THE ITEM 2021-09-01 10:02:04

AUTOMATIC UPDATES

HAVE BEEN PERFORMED Yes
 LAST UPDATE 2021-09-01 10:02:04

ITEM LOCATION HISTORY

ITEM COPIED OR MOVED 2015-04-13 08:37:18
 FROM D:\Data\ACPF\ACPF_Database\ACPF_MetaData\FldBndy_meta\ACPF_FieldBndy_meta
 TO \\NLAE08\Data\EDF_ACPF\ACPF_MetaData\FldBndy_meta\ACPF_FieldBndy_meta (1)

[Hide Metadata Details ▲](#)

Metadata Contacts ►

METADATA CONTACT

INDIVIDUAL'S NAME David James
 ORGANIZATION'S NAME USDA, Agricultural Research Service, National Laboratory of Agriculture and the Environment
 CONTACT'S ROLE point of contact

CONTACT INFORMATION ►

PHONE
 VOICE (515) 294-6858

ADDRESS

TYPE postal
 DELIVERY POINT 1015 N. University Blvd.
 CITY Ames
 ADMINISTRATIVE AREA Iowa
 POSTAL CODE 50011
 COUNTRY US
 E-MAIL ADDRESS david.james@ars.usda.gov

[Hide Contact information ▲](#)

[Hide Metadata Contacts ▲](#)

Metadata Maintenance ►

MAINTENANCE

UPDATE FREQUENCY not planned

[Hide Metadata Maintenance ▲](#)

Metadata Constraints ►

SECURITY CONSTRAINTS

CLASSIFICATION unclassified

CLASSIFICATION SYSTEM None

ADDITIONAL RESTRICTIONS

None

[Hide Metadata Constraints ▲](#)

Thumbnail and Enclosures ►

ENCLOSURE

ENCLOSURE TYPE File

DESCRIPTION OF ENCLOSURE original metadata

ORIGINAL METADATA DOCUMENT, WHICH WAS TRANSLATED yes

SOURCE METADATA FORMAT fgdc

[Hide Thumbnail and Enclosures ▲](#)

FGDC Metadata (read-only) ▼